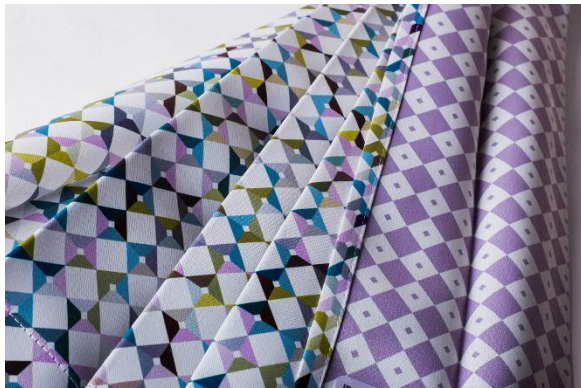


## Curtain fabrics

### Polyester blackout printed



#### Key advantages

Lantal blackout curtains made of 100% flame-resistant polyester have the following compelling advantages:

- **Printable on both sides with individual designs (i.e. cabin divider)**
- **Light blocking**
- **Washable at 40°C**
- **Permanent pleats**
- **Inherently flame-retardant**
- **Compliance with all airworthiness requirements**

#### Properties

##### Composition

100% flame-resistant polyester

##### Designs and colors

Customized designs for signature interiors. Both sides of the fabric can be printed. No design size limits in the warp (length) direction.

Lantal would be pleased to transfer your inspirations to reality, for example a

photorealistic visual like a mountain landscape or an individually created design.

#### Design data format

- TIF file (\*.tif) preferred, minimum 150 dpi resolution on original size.
- 1 repeat with dimension data in cm.
- Color references in Pantone, NCS or RAL.

#### Pleating

Heat-set pleating assures shape retention. The pleats always remain in the same good shape, even after several cleaning cycles.

#### Weight

The conditioned weight varies from approx. 240 to 370 g/m<sup>2</sup>, 7 to 11 oz/sy, tolerance ±5%.

#### Width

310 cm, 122 in. printed lengthwise

#### Base fabric

There are two different base fabrics available:  
Option 1: both sides of the fabric have a smooth surface.

Option 2: one side of the fabric has a structured surface, the other side has a smooth surface.

#### Availability / minimum order quantity

Lantal blackout curtains are available as ready-to-install parts.

A minimum production quantity of 60 lm of

- fabric would equate to
- 5 ship sets narrow body
- 2 ship sets wide body
- 1 ship set A380 / B747

---

**Specifications****Flammability, smoke/toxicity**

Lantal fabrics are permanently flame-resistant in accordance with FAR/CS 25.853, 12 sec. vertical, and meet the Airbus and Boeing specifications for smoke and toxicity if cleaned according to Lantal cleaning recommendations.

---

**Cleaning**

Washable at max. 40°C or dry cleaning as per Lantal cleaning recommendations.

---

**Service lifetime**

The specific service lifetime depends largely on the airline's interior philosophy (colors, quality), routing (long-haul, short-haul), geographical routes, load factors and cleaning attitudes.